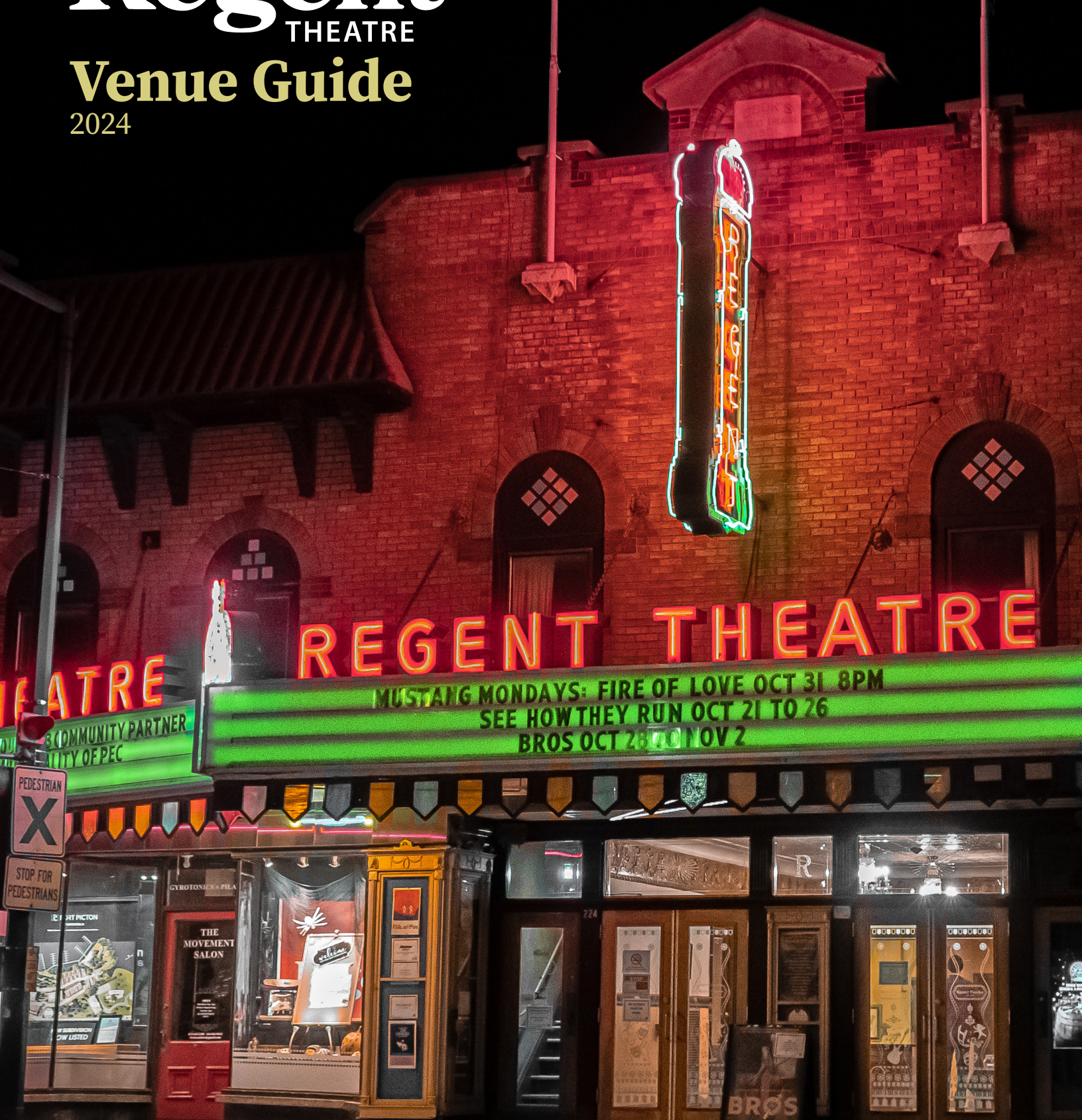


# The Regent THEATRE

## Venue Guide

2024



PEDESTRIAN  
X

STOP FOR  
PEDESTRIANS

GYROTONIX • PILA

THE  
MOVEMENT  
SALON

724

BROS

# Venue Guide

224 Picton Main Street – Picton, ON

Our Story.....	1
What We Do.....	1
Contacts.....	1
<b>Location</b> .....	<b>2</b>
<b>Auditorium</b> .....	<b>3</b>
Seating.....	3
Seat Map.....	3
Stage Dimensions.....	3
<b>Lighting</b> .....	<b>4</b>
Lighting Plot.....	4
<b>Audio</b> .....	<b>5</b>
FOH Audio.....	5
Monitor System.....	5
Microphones.....	5
Miscellaneous Audio.....	5
<b>Cinema &amp; Video</b> .....	<b>6</b>
Cinema.....	6
Video & Streaming.....	6
Rear Projection.....	6
<b>Green Room &amp; Dressing Rooms</b> .....	<b>7</b>
Green Room.....	7
Dressing Rooms.....	7
<b>The Loft</b> .....	<b>8</b>
Seating.....	8
Seat Map.....	8
<b>Reception</b> .....	<b>9</b>
Lobby / Box Office.....	9
Concession.....	9
Merchandise.....	9
<b>Accessibility</b> .....	<b>10</b>
In-person Attendance.....	10
Accessible Terrace.....	10
<b>Miscellaneous</b> .....	<b>11</b>
Loading / Parking.....	11
Power.....	11
Internet.....	11
On-site Marketing & Promotions.....	11

# Venue Guide

224 Picton Main Street – Picton, ON

## Our Story

The Regent is a rare example of a still intact Edwardian opera house, constructed in 1918 using the 80-year old foundation of a former warehouse.

Designed by Toronto architects Warrington and Page for George Cook, The Regent's generous stage is one of the largest in Eastern Ontario. Above the stage is a 18.7 metre (62 foot) fly tower. Original dressing rooms below the stage.

Situated on Main Street in picturesque Picton, Ontario, the historic Regent Theatre is the centre for the arts in Prince Edward County.

## What We Do

The Regent provides year-round entertainment which reflects its community including: live theatre, music, movies, art films, satellite presentations (opera) and digital programming (podcast).

## Contacts

### Rental Inquiries

**Alexandra Seay**, Executive Director

[alexandra@theregenttheatre.org](mailto:alexandra@theregenttheatre.org)

### Billing & Administration

Office Administrator

[admin@theregenttheatre.org](mailto:admin@theregenttheatre.org)

### Technical Inquiries

**Kyle Brown** – Technical Director

[tech@theregenttheatre.org](mailto:tech@theregenttheatre.org)

### AV/Cinema Programming

**Logan Somers** – Digital Media Producer

[logan@theregenttheatre.org](mailto:logan@theregenttheatre.org)





# Location

Situated on Main Street in picturesque Picton, Ontario, the historic Regent Theatre is a centre for the arts in Prince Edward County. The County is one of Canada's hottest wine and culinary destinations and is home to the famed sandy beaches of Sandbanks Provincial Park. Picton Main Street is The County's bustling hub, peppered with a wide assortment of cafés, boutique shops, and the landmark Royal Hotel, all located within easy walking distance of The Regent Theatre.





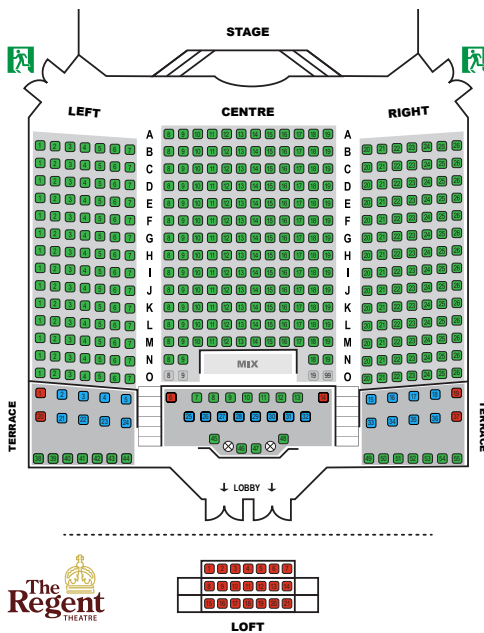
# Auditorium



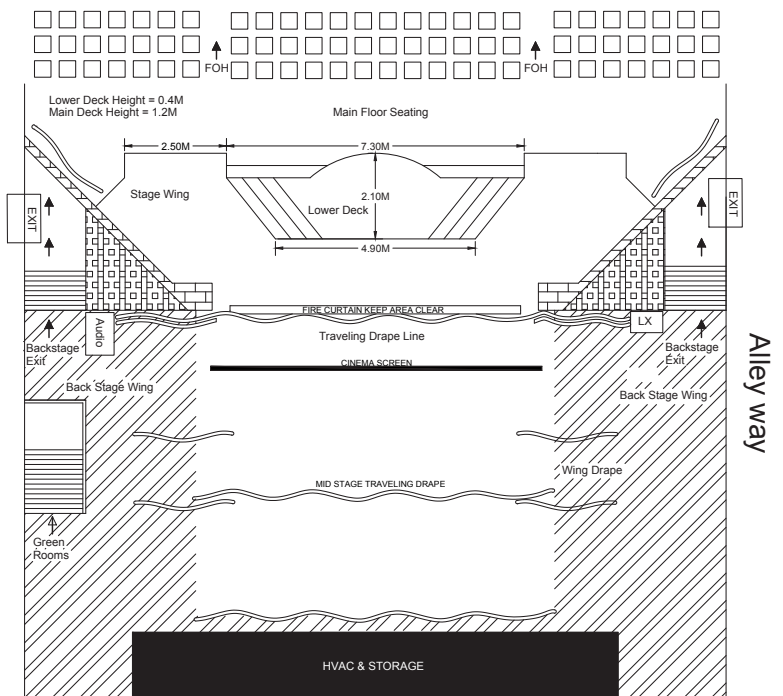
## Seating

A 415 seat theatre with a proscenium arch and fixed seating for live events or film. Optional: inclusion of 21 Loft seats for a total capacity of 436.

## Seat Map



## Stage Dimensions



Scale = 1:100  
1CM = 1M

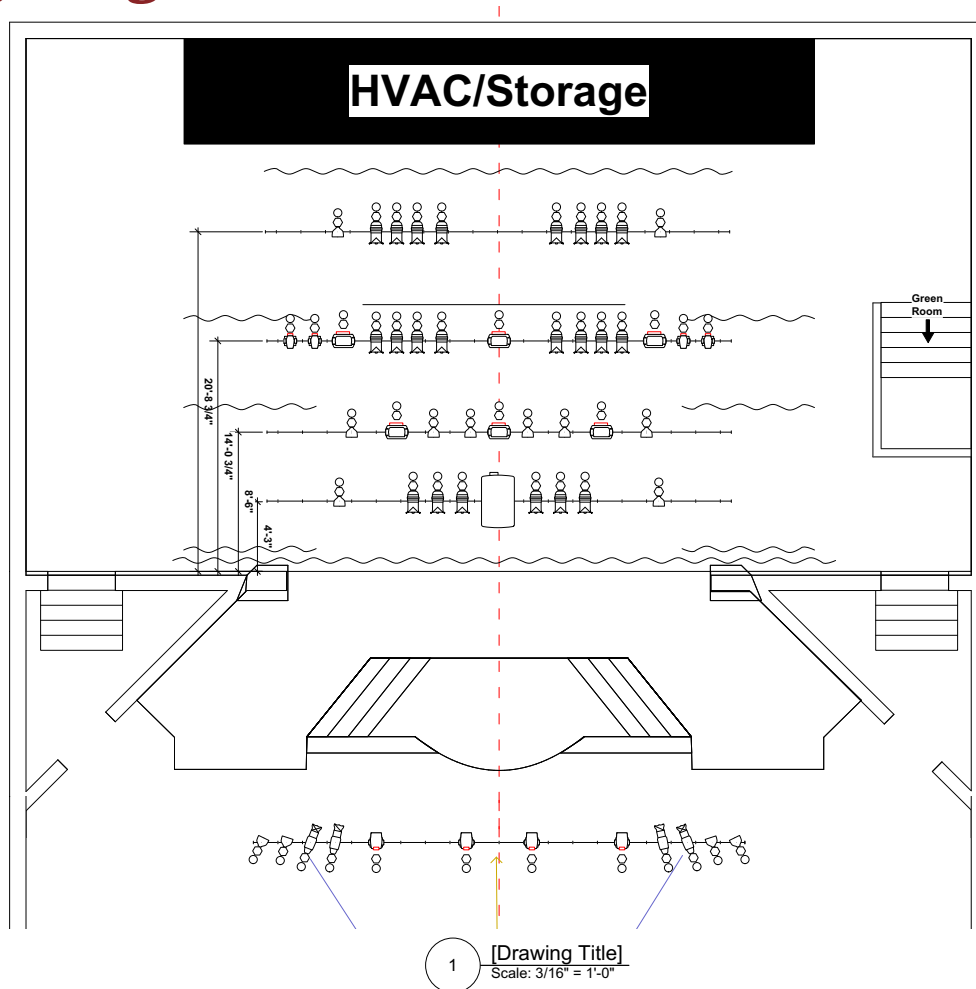
# Lighting

- » Grand MA onPC lighting console
- » AVAB DDII Dimmer
- » ETC Sensor Dimmer
- » Par Cans x 28
- » Source 4 Leko x 18
- » Source 4 Fresnel x 6
- » Follow Spot
- » Hazer
- » ADJ Focus Beam LED x 8
- » ADJ UB 9H 6W Hex LED Bar x 5
- » ADJ Focus Wash 400 x 4
- » Elation ZW37 x 6

for larger productions:

- » HID Moving head beam fixture lighting packages available for rent on request.

## Lighting Plot





# Audio

## FOH Audio

- » Console Midas M32
- » Line Array QSC KLA12 x 8
- » Subwoofers QSC KLA181 x 8

## Monitor System

- » Console Behringer x 32
- » EAW RS121 Powered Monitor Speakers x 6
- » Mackie Drum Sub

## Microphones

- » Shure SM58 x 5
- » Shure SM57 x 5
- » Sennheiser 835 x 5
- » Sennheiser 935 x 1
- » Sennheiser 609 x2
- » AT2020 x 2
- » Shure PG52 x 1
- » Sennheiser e840 x 1
- » Shure BETA52 x 1
- » Shure PG56 x 3
- » Shure QLXD handheld / belt pack combo wireless x 4
- » Shure SM137 Condenser Instrument Microphone x 2
- » DI x 6

## Miscellaneous Audio

- » Tall booms x 16
- » Short booms x 12
- » Straight stands x 9
- » Music stands x 18
- » Chickering Piano
- » 8x8 Drum riser

If we don't have what you need, we'll help you source it!



# Cinema & Video

## Cinema

The Regent is equipped with a **Christie CP2210** projector with 5.1 Dolby surround sound system and drop-down hard screen.

## Video & Streaming

Video recording and streaming gear are available for rental in house.

- » Roland VR-4HD Video Mixer
- » Cannon C100 Mark II Camera x1
- » Cannon XA45 Camera x2
- » AIDA PTZ-X20-IP Broadcast Camera

## Rear Projection

Rear projection onto the scrim located at mid-stage can be accommodated with a **Sony VPL-FHZ85 7300LM WUXGA 3 LCD Laser Projector** capable of front or rear projection, for an additional fee.





# Green Room & Dressing Rooms

## Green Room

Green rooms / Dressing Rooms are located beneath the stage with access from the rear of the building and from a staircase located stage left on the main stage area. There are three separate Rooms which can each accommodate 3-4 performers with a shared common area for artists and two shared bathrooms – one with shower facility.



## Dressing Rooms

Spacious vintage dressing rooms with washroom facilities and accessible from rear parking lot. Access from stage is by stairs only.



# The Loft

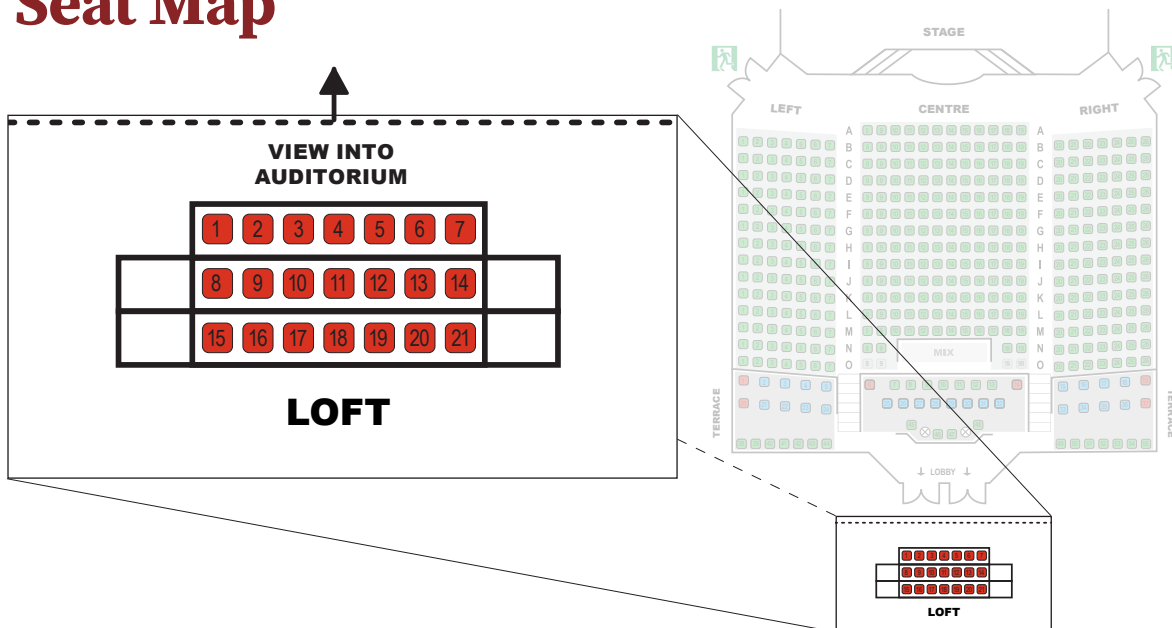
224 Picton Main Street – Picton, ON

## Seating

A flexible space with a recommended capacity of 60 featuring a private bar and washroom facilities. The Loft is equipped with projection screen and can be configured as a meeting space, VIP viewing space for a concert in the Auditorium, or self-contained performance space. (**Note:** The Loft is accessible by stairs only).



## Seat Map



# Reception

Box Office and Concession are operated by dedicated Regent Volunteers, overseen by a Front of House Manager. (**Note:** The Regent Theatre does not currently accept cash.)

## Lobby / Box Office

The box office is located directly inside the Picton Main Street front entrance, offering barrier free access. Our box office offers contactless payment, and our advance ticketing system offers contactless check-in with our in-theatre ushers.

## Concession

The Regent Theatre's newly renovated concession area offers a wide range of snacks and drinks including lots of local favourites, and is fully licensed for service of alcohol.



## Merchandise

Artists wishing to sell merchandise in the lobby will be provided with a table(s) but must provide their own POS system and/or cash box. Unless otherwise stated in rental agreement The Regent withholds 10% gross sales on merchandise.



# Accessibility

## In-person Attendance

- » Ample barrier-free space is located at the back of the theatre in our accessible Terrace to accommodate wheelchairs and those accompanying.
- » Our front doors offer street-level entry, equipped with an automated door opener, and both our Concession area and Box Office are barrier-free.
- » The Regent Theatre provides Assisted Hearing Devices for movies, which can be signed out at the concession. Booster seats are also available.
- » A first aid kit and AED are located behind at the Box Office. A first aid kit is located behind concession.
- » Booster seats are available at the Box Office.

## Accessible Terrace

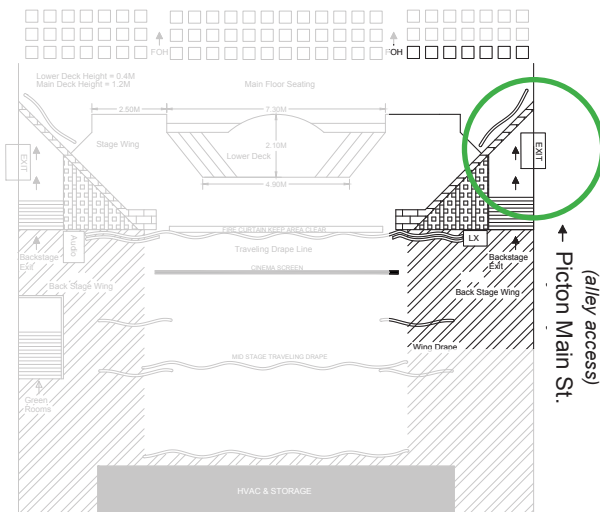
In 2022, The Regent Theatre added three accessible seating terraces to the main auditorium. The Regent now accommodates up to 26 wheelchairs and/or patrons with accessibility restrictions for comfortable entertainment experiences.



# Miscellaneous

224 Picton Main Street – Picton, ON

## Loading / Parking



Parking for essential crew and artists is located behind the venue with parking for up to 6 cars. Loading in is done via the east side alley of the building with double doors to the main floor. Free municipal van and trailer parking is located less than a kilometer away in a local park.

## Power

The Main Stage Has Both 20A and 15A circuits available on stage. Power will be found downstage right, by the lighting dimmer.

## Internet

Hardline network connections can be accessed at FOH as well as in our upper tech booth by request. Wifi is available throughout the building (note: signal is not optimal in green room / dressing rooms due to the building's structure).

## On-site Marketing & Promotions

Included:

- » Exterior marquee listing
- » Exterior poster display
- » Free standing signs in lobby
- » Event listing on website

Optional (additional fees apply):

- » Digital signage in lobby
- » Social media support
- » On-screen ads or trailers (30sec)

